



Building up moments.

 **MASTERTENT**®

# MASTERTENT worldwide.





Extensive  
**warranty service**

**Highest quality  
materials**

Made in  
**Europe**

Manufacturer  
**direct in USA**

Proven  
**durability**

Global  
**market leader**



Building up moments

Building up moments.

**MASTERTENT**<sup>®</sup>

# Intro

## Folding tents

<b>S1</b>	P. 8
Setup	P. 10
Sizes	P. 12
Frame	P. 14
Fabric	P. 20
Sidewalls	P. 22
Certificates and warranties	P. 24
Printing	P. 26
Automatic roof awnings	P. 34
Royal kit	P. 38
Loden kit	P. 42
Rescue kit	P. 46
New products: 10x10 Square and	
17x17 Pagoda	P. 50
<b>S2</b>	P. 58
Sizes	P. 60
Frame	P. 62
Sidewalls	P. 64
Fabric	P. 66
Certificates and warranties	P. 67
Quick overview S1 and S2	P. 68
Accessories - MASTERTENT-Flag	P. 72

## Pavilions

Pavilions	P. 82
Setup	P. 86
Square pavilion	P. 88
Hexagon pavilion	P. 90
Hexagon pavilion with	
star-shaped roof	P. 92
Octagon pavilion	P. 94
Colors and personalization	P. 96
Transport box	P. 98
Accessories	P. 100
Certificates and warranties	P. 102

# Inflatables

Inflatables	P. 104
Tripod	P. 108
MS5	P. 110
Kokon	P. 112
Tequila	P. 114
Bottle	P. 116
Fan	P. 117



**Perfect for any occasion.**





---

**MASTERTENT S1**



# S1 Setup



MASTERTENT delivers the highest quality folding tents in a compact design, protected by an extremely strong PVC transport bag. Set up fast in only 60 seconds with no additional tools or trained staff. MASTERTENT folding tents are all-in-one and easy-to-use with no loose parts that can be lost or cause delays.



**60**  
SECONDS 

# S1 Sizes



TENT SIZE	WEIGHT	STANDARD ENTRANCE HEIGHT *	STANDARD OVERALL HEIGHT *	PACK SIZE (W X D X H)
26 x 13 ft	171.3 lbs.	7' 1"	12' 7"	17" x 28" x 81"
20 x 13 ft	130.1 lbs.	7' 1"	12' 7"	17" x 22" x 81"
20 x 10 ft	134.5 lbs.	6' 7"	10' 7"	17" x 28" x 63"
17 x 17 ft	170.2 lbs.	7' 1"	16' 4"	21" x 21" x 81"
10 x 15 ft	102.3 lbs.	6' 7"	10' 7"	17" x 22" x 63"
13 x 13 ft	101.9 lbs.	7' 1"	12' 7"	17" x 17" x 81"
13 x 6,5 ft	75.2 lbs.	7' 1"	10' 9"	12" x 17" x 81"

TENT SIZE	WEIGHT	STANDARD ENTRANCE HEIGHT *	STANDARD OVERALL HEIGHT *	PACK SIZE (W X D X H)
10 x 10 ft	80.7 lbs.	6' 7"	10' 7"	17" x 17" x 63"
Square	99.2 lbs.	6' 7"	9'	17" x 17" x 81"
10 x 6,5 ft	82.0 lbs.	6' 7"	9' 9"	17" x 22" x 63"
10 x 5 ft	58.4 lbs.	6' 7"	10' 3"	11" x 19" x 62"
6,5 x 6,5 ft	67.2 lbs.	6' 7"	9' 9"	17" x 17" x 63"
5 x 5 ft Flat Roof	46.7 lbs.	6' 7"	7' 10"	11" x 15" x 62"
5 x 5 ft Peak Roof	48.3 lbs.	6' 7"	8' 4"	11" x 15" x 62"

\* Custom heights available on select sizes. Tent specifications subject to change without notice.



# S1 all-aluminum frame



The MASTERTENT S1 series stands out with the highest quality of materials and fine workmanship down to the smallest detail. The strongest and most durable folding tent frame in the industry with its robust all-aluminum construction – features octagonal leg profile shape, 43 × 49 mm (1.69 x 1.93 in) profile size, and 2.5 mm (.10 in) wall thickness.

The patented tension system on the corner legs provides optimum tension across the roof, so that all surfaces are smooth and wrinkle-free - great looking print designs and ultimate rain performance.



#### RELEASE SYSTEM.

The release system offers an easy push button slide that allows safe and smooth opening and closing of the folding tent. Also, thanks to the integrated leg-lock feature, transport and setup is even easier.

---



#### CONNECTING ELEMENTS.

All frame connecting elements are made of aircraft grade aluminum, like the frame legs and folding trusses. At the contact points with the roof fabric the elements are reinforced with protective rubber padding to prevent abrasion. This means the ultimate frame to fabric protection that extends performance while the roof is always mounted for convenience.

---





SPARE PARTS.

Every part of our aluminum frame can be replaced if needed with parts that have unique article numbers for easy identification. All the folding components are connected with solid pins, which provide excellent reliability while easily being removed and replaced when exchanging parts. Quality parts and uncomplicated tent repair is how it's supposed to be.



LABEL.

The quality control of every roof follows strict criteria. After passing inspections, a label with its serial number is sewn into every roof. Certifications and additional safety instructions are also incorporated on the label.

PEAK FLAG.

The patented peak mount and cap allows a peak flag to fly high from the roof peak, as well as multiple flags or a banner on larger sizes. The cover cap not only ensures simple installation of the peak flag but also provides a secure connection of the roof to the frame at each peak.





FRAME COLORS.

MASTERTENT offers the S1 all-aluminum frame in 9 standard colors: anodized silver or 8 powder coated options. Our durable powder coating is designed for outdoor use and is very resistant. We also have 201 RAL colors available for custom selection.



LEG-LOCK.  
Patented  
pin-system



Octagonal  
foot plate



Valance tension strap

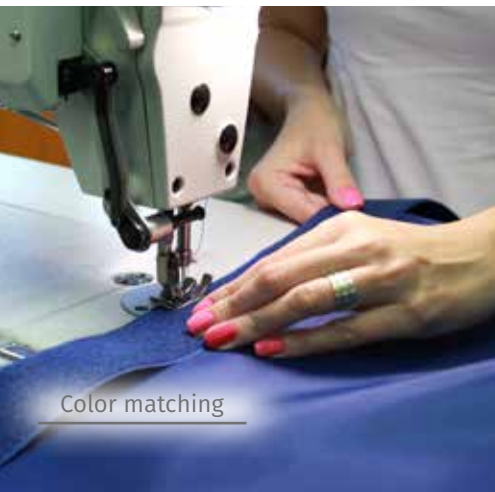
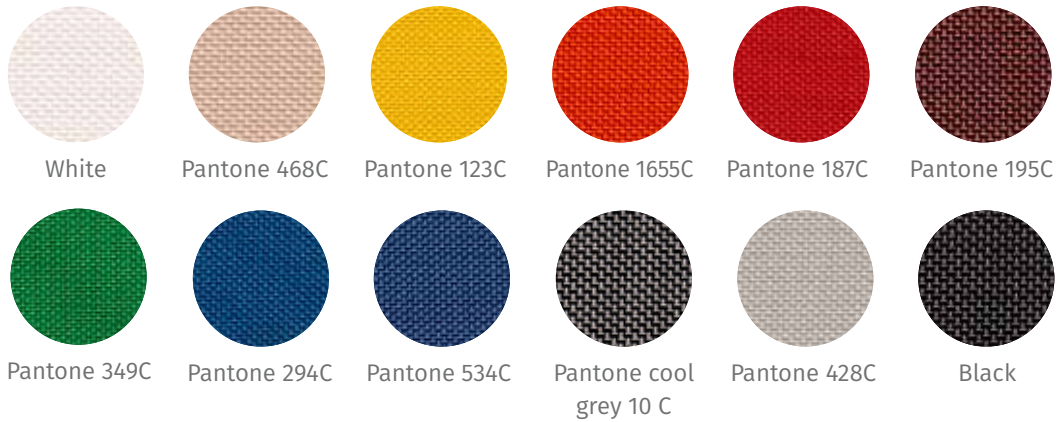


**In-house production.**



# S1 fabric

MASTERTENT S1 roofs and sidewalls are made of high-quality polyester fabric (roofs: 500D Oxford, sidewalls: 250D Oxford) available in 12 standard colors. All visible fastening Velcro®, trim and stitching are color matching. The polyester is waterproof, wind-tolerant and fire-retardant in compliance with NFPA 701, CPAI-84 Sec. 6, CAN/ULC-S109 and EN-Norm 13501-1.





# S1 sidewalls



**CLOSED.**

360° protection.



**WITH WINDOW.**

Arched windows made from durable transparent PVC.



**WITH DOOR.**

Roll-up door with zippers accessible from both the inside and outside.



**HALF HEIGHT.**

Used with crossbar or counter.



**PARTITION WALL.**

Internal divider.



**PANORAMIC WINDOW.**

Full visibility.



#### SIDEWALL CONNECTION.

The MASTERTENT S1 sidewall features wrap-around leg fastening that provides a great look as well as protection from the weather. Installation is quick and simple with fastening to the inside edge of the roof and adjacent legs or sidewalls. All visible fastening Velcro®, trim and stitching are color matching.

---



#### MULTIPLE SIDEWALLS.

The wrap-around flaps of each S1 sidewall also allows for easy attachment of multiple sidewalls. While the first sidewall wraps the tent leg, the second adjacent wall connects to the exterior with a vertical Velcro® seam which provides a weather-tight seal and extremely nice looking presence.

---

#### COUNTER.

The counter is designed with quality wood tops and sturdy aluminum folding legs that offer mobile convenience with a professional feel. It sets up quickly in seconds and attaches to the tent easily with integrated leg clamps. The half height sidewall installs cleanly along the front of the counter with built-in rail and cord, keeping the colors and graphics of the tent flowing.

---



#### CROSSBAR.

The crossbar provides quick and simple support for a half height sidewall. Like the counter, the rail is built-in to the aluminum tubing for easy install of the half height wall's cord as well as a strong hold by the same integrated leg clamps. The crossbar can be placed anywhere around the tent - one side or multiple sides.

---





# S1 certificates and warranties

MASTERTENT's philosophy of quality is reflected in generous warranty service, numerous international certifications, as well as in reliable customer service.

## S1 WARRANTY SERVICE

- Limited lifetime manufacturer's warranty on the material or production defects of the aluminum MASTERTENT S1 folding tent frame.
- Limited lifetime warranty against corrosion of the aluminum MASTERTENT S1 folding tent frame.
- 10- year guarantee for the availability of all spare parts.

## SERVICE

- Extremely reliable and fast delivery times
- Customer support on site
- Extensive distribution network
- In-house production and development
- Special requests from our customers are a welcome challenge.



## CERTIFICATIONS

- MASTERTENT® is TÜV-certified (product certification).
- MASTERTENT® fabrics are fire-retardant in compliance with the NFPA 701, CPAI-84 Sec. 6, CAN/ULC-S109 and EN 13501-1: 2007, as well as successfully tested to current ISO criteria for tensile strength, waterproofness and color fastness.
- MASTERTENT® has been successfully wind tunnel tested by a renowned institute to ensure the stability and performance in various wind speeds.
- MASTERTENT® has been analyzed by certified engineers for static calculation and requires no further certification from structural engineers or authorities.





**Customization.**



# Print designs



MASTERTENT roofs and sidewalls can be customized with our high-quality printing techniques. Our in-house graphic design and printing departments are ready to help customers create the perfect design and then bring it to life - fonts, logos and pictures - color gradients and even large area printing are possible with us.



Building up moments.

**MASTERTENT®**



**MASTERTENT 10 x 10 ft**



**MASTERTENT 10 x 10 ft**

Building up moments.

**MASTERTENT®**



**MASTERTENT 10 x 10 ft**



**MASTERTENT roof 10 x 10 ft**



**THERMAL PRINTING.**

Thermal transfer printing uses high-quality digitally printed vinyl that is precisely cut out to create desired logos, titles and messaging. The transfer process through heat application creates an extremely durable bond to the surface of any standard color fabric. This printing style is particularly suitable for printing areas that are small relative to the full printable surface of the fabric.



MASTERTENT 10 x 10 ft



MASTERTENT 10 x 10 ft



MASTERTENT 10 x 10 ft



MASTERTENT roof 10 x 10 ft

### SUBLIMATION PRINTING.

Dye-sublimation printing is the perfect solution for high-resolution full-surface graphics, images and custom colors - creating beautiful photorealistic roofs and sidewalls. Custom designs are printed on white fabric through a special printing technique where ink penetrates the fabric threads, delivering the ultimate finish, high color intensity and scratch resistant durability. The non-printed side of roofs and sidewalls are in white with the option for a sewn on standard color or double printing on sidewalls.





**A variety of solutions.**





**Good business.**



# Automatic roof awnings



The MASTERTENT S1 offers automatic roof awnings that are beautifully integrated into the frame and roof of the folding tent. Like every MASTERTENT, our automatic roof awning style tents can be set up in just 1 minute with no additional tools or loose parts - awnings open automatically as the tent frame unfolds. Awnings are available on any side: 1, 2 adjacent, 2 opposite, 3 or all 4 sides of the tent. Each side with an eave extends 32 in. with 1, 2 or 3 awnings and 26 in. when all 4 sides have awnings - offering expansive coverage and shelter for the respective tent size.



TENT SIZE	4 AUTO AWNINGS	2 AUTO AWNINGS	1 AUTO AWNING	ENTRANCE HEIGHT *	OVERALL HEIGHT *	PACK SIZE (W X D X H)
26 x 13 ft	/	32 in	32 in	7' 1"	13' 7"	17" x 28" x 81"
20 x 13 ft	/	32 in	32 in	7' 1"	13' 7"	17" x 22" x 81"
20 x 10 ft	/	32 in	32 in	6' 7"	11' 7"	17" x 28" x 63"
10 x 15 ft	/	32 in	32 in	6' 7"	11' 7"	17" x 22" x 63"
13 x 13 ft	26 in	32 in	32 in	7' 1"	13' 7"	17" x 17" x 81"
10 x 10 ft	26 in	32 in	32 in	6' 7"	11' 7"	17" x 17" x 63"

\* Custom heights available on select sizes. Tent specifications subject to change without notice.



**The elegance of perfection.**





# Royal kit



The MASTERTENT Royal kit provides an elegant design and a great presence for special occasions. The scalloped valances of the roof, in combination with the color-matching gathered corner curtains and sheer ceiling, allows your MASTERTENT to showcase a sophisticated atmosphere. The lighting system concealed above the sheer ceiling will set the perfect mood anytime, day or night.



Corner curtain



Scalloped valance



Sheer ceiling



Lighting system



**Rustic and luxury combined.**



# Loden kit



The MASTERTENT Loden is a rustic yet luxurious alpine style that uses traditional loden fabric for the exterior - originating in the Alp Mountains. The roof cover design flows onto matching accented sidewalls and corner curtains.

The high-quality natural material with its unique features stands for exclusivity, sustainability and tradition.



Closed sidewall



Brochure holder



The Loden kit is an accessory package that fits onto the classic MASTERTENT folding tent which includes a roof cover, corner curtains and sheer ceiling. The loden fabric is available in 5 different colors (dark green, dark grey, light grey, bordeaux and ecru), which can be interchanged to create your customized design.



**Equipped for every mission.**





# Rescue kit



The MASTERTENT Rescue tent is specially designed for rescue and support missions - military, police, fire, medic, disaster relief and much more. In the field, it offers fast and easy setup with high-quality components that securely connect and provide weather and privacy protection in sensitive situations.



#### SIDEWALLS.

The Rescue sidewalls are equipped with functional windows - zippers allow the window to open and roll-up.

---



#### INSECT SCREEN.

The integrated insect screen provides good ventilation and natural light while keeping insects out.

---



#### PRIVACY SCREEN.

The interior of the window is equipped with an opaque cover - keep up for window function or close for privacy.

---



#### FLOOR.

The Rescue floor is made of heavy-duty PVC with a non-skid surface - secured to the tent legs and sidewalls by an innovative perimeter connection system.

---



#### DOORS.

The doors are versatile and rugged with the window and screen components built into the upper portion and heavy-duty PVC protecting the lower. The extended ground layer of PVC allows for the use of sandbags in environments where dirt and water could infiltrate.

---



#### CONNECTION SYSTEM.

The connection system is designed to quickly and easily fasten the floor and sidewalls together with elastic corded bars through built-in fabric sleeves. Tent stakes installed along the floor perimeter anchor everything firmly.

---



**Innovations.**



# 17x17 Pagoda



The MASTERTENT 17 x 17 ft Pagoda has a grand presence with the ease and convenience of a folding tent. The innovative frame allows for this expansive tent with its towering 16 ft roof peak to quickly fold down to an easy transport size with no additional tools or loose parts. The attractive silhouette and elegant scalloped valances are perfect for special events while the innovative folding design saves a tremendous amount of time and cost over traditional pagoda style tents. At close to 17 x 17 ft this tent offers over 270 ft<sup>2</sup> of coverage space.



Weight: 170.2 lbs.  
Entrance height: 7' 1"  
Overall height: 16' 4"

---

To allow the extra tall peak of the MASTERTENT 17 x 17 Pagoda to go from compact pack to towering tent the central mast of the frame slides into position with a safety push button and a secure locking bolt.

---



PACK SIZE.  
Compact package dimension:  
22 x 22 x 81 in

---

The large folding trusses have extra vertical stabilizing posts at the perimeter connecting elements.

---



# 10x10 Square



The MASTERTENT 10 x 10 ft Square is unique and eye-catching - the perfect advertising tent that attracts the crowd to deliver a big message. The innovative frame provides enormous roof sides - nearly 3ft tall and creating almost 30 ft<sup>2</sup> of roof advertising surface on each side - approaching 3x the vertical space of a classic roof. The channeled roof and integrated water drain keeps the Square performing rain or shine.



▣ **9 ft<sup>2</sup>** Printing Area  
Valance height: 11 in



▣ **24 ft<sup>2</sup>** Printing Area  
Valance height: 29 in



Weight: 99.2 lbs.  
Entrance height: 6' 7"  
Overall height: 9'  
Pack size: 17 x 17 x 81 in

As rainwater is channeled to the center of the roof, the water-tight drain seal and pipe keeps in flowing out - easily install in any direction.







**Maximum visibility.**



---

**MASTERTENT S2**



# S2 Sizes



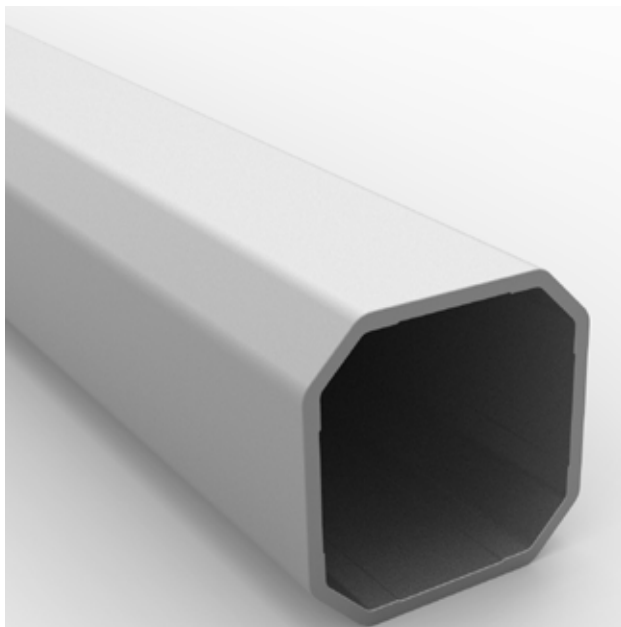
The MASTERTENT S2 series offers MASTERTENT quality with an excellent cost-benefit balance and available in 3 different sizes: 10 x 10 ft, 15 x 10 ft and 20 x 10 ft. The S2 frame features an all-aluminum sturdy design and a strong octagonal leg profile size of 37 × 42.5 mm (1.45 x 1.67 in) with a wall thickness of 2.1 mm (.08 in). Like the S1, the S2 is quick and easy to set up as well as being compatible with all the great MASTERTENT accessories.

TENT SIZE	WEIGHT	ENTRANCE HEIGHT *	OVERALL HEIGHT *	PACK SIZE (W X D X H)
20 x 10 ft	134.5 lbs.	6' 7"	10' 7"	17" x 28" x 63"
10 x 15 ft	102.3 lbs.	6' 7"	10' 7"	17" x 22" x 63"
10 x 10 ft	80.7 lbs.	6' 7"	10' 7"	17" x 17" x 63"

\* Adjustable to reduced heights. Tent specifications subject to change without notice.



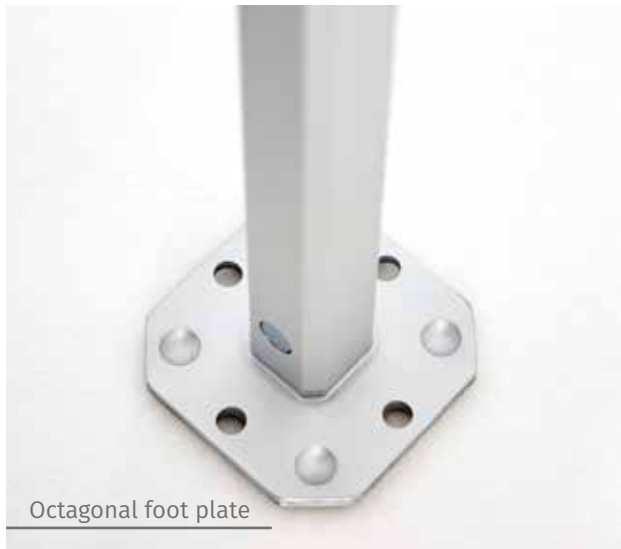
# S2 all-aluminum frame



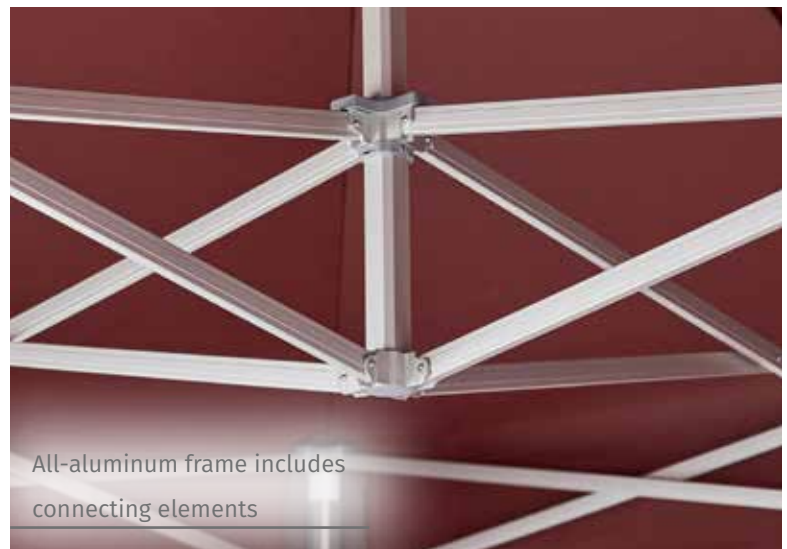
- Leg profile shape: **Octagonal**
- Leg profile size: **37 × 42.5 mm (1.45 x 1.67 in)**
- Leg wall thickness: **2.1 mm (.08 in)**



Release system



Octagonal foot plate



All-aluminum frame includes connecting elements



#### SPARE PARTS.

Every part of our aluminum frame can be replaced if needed with parts that have unique article numbers for easy identification. All the folding components are connected with solid pins, which provide excellent reliability while easily being removed and replaced when exchanging parts. Quality parts and uncomplicated tent repair is how it's supposed to be.

---



#### CONNECTING ELEMENTS.

All frame connecting elements are made of aircraft grade aluminum, like the frame legs and folding trusses. At the contact points with the roof fabric the elements are reinforced with protective rubber padding to prevent abrasion. This means the ultimate frame to fabric protection that extends performance while the roof is always mounted for convenience.

---



## S2 sidewalls



The MASTERTENT S2 series offers 5 different versions of sidewalls that can be mounted in any position:

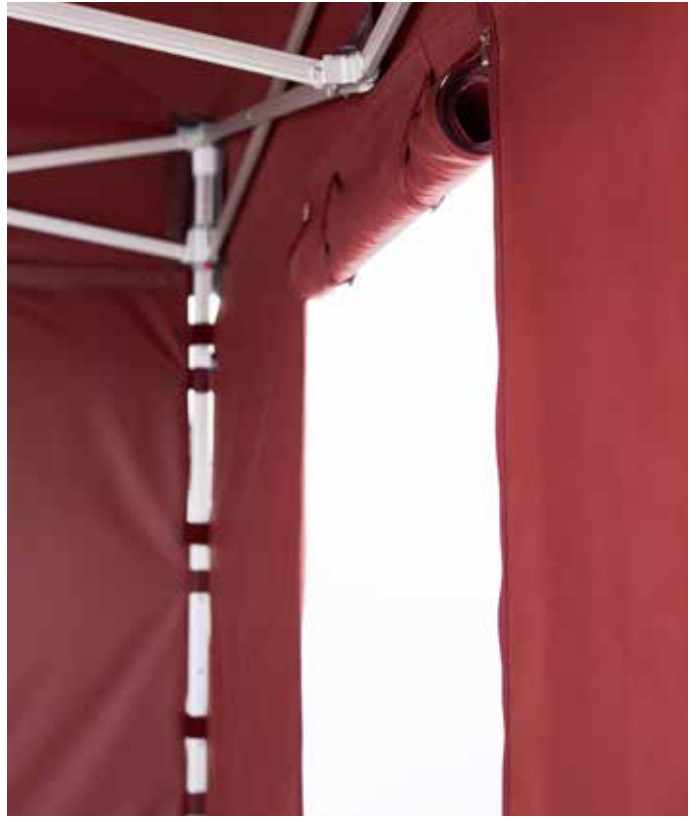
CLOSED - 360° protection.

WITH WINDOW - Arched windows made from durable transparent PVC.

WITH DOOR - Roll-up door with zippers accessible from both the inside and outside.

HALF HEIGHT - Used with crossbar or counter.

PARTITION WALL - Internal divider.



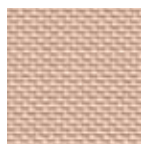
# S2 Fabric



The roofs and sidewalls of the MASTERTENT S2 are available in 12 standard colors, made of high-quality 250D Oxford polyester fabric. All visible fastening Velcro®, trim and stitching are color matching. The polyester is waterproof, wind-tolerant and fire-retardant in compliance with NFPA 701, CPAI-84 Sec. 6, CAN/ULC-S109 and EN-Norm 13501-1.



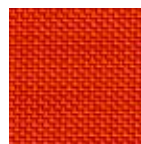
White



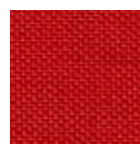
Pantone 468C



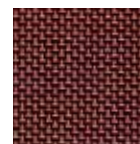
Pantone 123C



Pantone 1655C



Pantone 187C



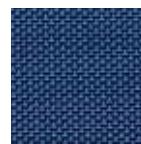
Pantone 195C



Pantone 349C



Pantone 294C



Pantone 534C

Pantone cool  
grey 10 C

Pantone 428C



Black

# S2 certificates and warranties

The quality standards of MASTERTENT are expressed in the generous warranty service, numerous international certifications, as well as in reliable customer service.

## S1 WARRANTY SERVICE.

- Limited lifetime manufacturer's warranty on the material or production defects of the aluminum MASTERTENT S2 folding tent frame.
- Limited lifetime warranty against corrosion of the aluminum MASTERTENT S2 folding tent frame.
- 10- year guarantee for the availability of all spare parts.

## CERTIFICATIONS.

- MASTERTENT® is TÜV-certified (product certification).
- MASTERTENT® fabrics are fire-retardant in compliance with the NFPA 701, CPAI-84 Sec. 6, CAN/ULC-S109 and EN 13501-1: 2007, as well as successfully tested to current ISO criteria for tensile strength, waterproofness and color fastness.
- MASTERTENT® has been successfully wind tunnel tested by a renowned institute to ensure the stability and performance in various wind speeds.
- MASTERTENT® has been analyzed by certified engineers for static calculation and requires no further certification from structural engineers or authorities.

## SERVICE.

- Extremely reliable and fast delivery times
- Customer support on site
- Extensive distribution network
- In-house production and development
- Special requests from our customers are a welcome challenge



# S1

Industry-leading folding tent with maximum stability and stature - heavy-duty use over long periods of time.

- Profile shape: **Octagonal**
- profile thickness: **43 × 49 mm (1.69 x 1.93 in)**
- wall thickness: **2.5 mm (.10 in)**



## S2

A robust and well-designed model for regular use - its all-aluminum heritage provides stability and securing.

- Profile shape: **Octagonal**
- profile thickness: **37 × 42.5 mm (1.45 x 1.67 in)**
- wall thickness: **2.1 mm (.08 in)**

# Technical specifications

## S1

### FRAME

Leg profile size	43 x 49 mm (1.69 x 1.93 in)
Leg wall thickness	2.5 mm (.10 in)
Leg profile shape	Octagonal
Folding truss profile size and wall thickness	30 x 15 x 2.8 mm (1.18 x .59 x .11 in)
Spring loaded corner bracket	✓
Foot plate	Aluminum
Leg-lock pin-system	✓
Frame colors	9 standard colors
Available sizes	12 standard sizes
Connecting elements	Aluminum
Push button release	✓
Peak flag capability	✓
Height adjustability	3 levels
Spare part numbering	✓

### ROOF

Fabric quality	Oxford 500D
Fire-retardant	✓
Waterproof	✓
Fabric colors	12 fabric colors
Velcro® / fleece / stitching color	Color matching
Trim color	Color matching
PVC reinforcement color	Color matching
Fastening to frame	Securing hook and Velcro® straps
Valance tensioning straps	✓
Roof mounting	✓
Can remain mounted during transportation	✓

### SIDEWALL

Fabric quality	Oxford 250D
Fire-retardant	✓
Waterproof	✓
Sidewall fastening to tent legs	Continuous full length wrap-around flaps
Models	Closed, with arched windows, roll-up door, half height

### WARRANTY

Years	Limited lifetime
-------	------------------

# S2

37 x 42.5 mm (1.45 x 1.67 in)

2.1 mm (.08 in)

Octagonal

28.5 x 15 x 2 mm (1.12 x .59 x .08 in)

Aluminum



Anodized Silver

10 x 10 / 15 x 10 / 20 x 10 ft

Aluminium



3 levels



Oxford 250D



12 fabric colors

Color matching

Color matching

Color matching

Velcro® straps



Oxford 250D



Color matching Velcro® straps

Closed, with arched windows, roll-up door, half height

Limited lifetime



S1 Peak flag capable



S2 Standard roof peak



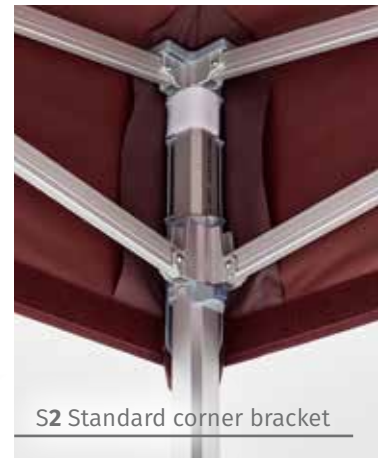
S1 sidewalls with full flaps



S2 sidewalls with straps



S1 Tensioning corner bracket



S2 Standard corner bracket



---

**Quality accessories for your folding tent.**



# MASTERTENT-Flag



Tent leg flag mount

The MASTERTENT teardrop flag is an ideal advertising tool to attract even more attention, available with full sublimation printing for endless design possibilities. Teardrop flags can be free-standing using the indoor cross stand or weighted base plate, or can mount to the tent frame with a heavy-duty connecting clamp. All mounting options are extremely quality components and will work with the two available teardrop flag sizes:

Medium - 8' 3" x 3' | Large - 11' 2" x 3' 2"



# Accessories



## RAIN GUTTER.

The MASTERTENT rain gutter installs easily and prevents rain water from entering between two or more side-by-side tents. The strong PVC can capture heavy showers and channel the water out the optional 1 or 2 side outlets, available in all 12 standard colors.

---



## LED LIGHTING.

The dimmable LED-Lighting system consists of four high-quality flood light strips that are powerful and weather-resistant. Using 60 watts to create ~ 5,400 lumens at a 4,000 Kelvin color. Mounting is easy and offers a clean look by clipping to the folding trusses of the tent.

---



## HALOGEN LIGHTING.

The halogen lighting system utilizes three 150 watt halogen spotlights that yield ~ 7,200 lumens at a color of 3,000 Kelvin. Quickly and easily attach the lighting mount to the tent peak mast or legs.

---



**CONNECTING CLAMP.**  
The tent connecting clamp provides a secure connection of side-by-side tents for stability and fixed positioning.

---

**MOBILE HEATER.**  
The mobile heater (1500 Watt, 250 V, 50 HZ) blasts warmth to +/- 150 sqft. of tent area with easy mounting to the tent peak mast or legs.

---



**TRANSPORT WHEELS.**  
The heavy-duty transport wheels quickly secure to the foot plates of the tent, with or without the transport bag installed, and allow for easy movement around venues. Being designed independent of the bag results in much easier installation and increased function.

---



**ROOF VENTS.**  
The roof vents installed just below the peak allow interior smoke, fumes or odors to escape - dual opposite side vents provide maximum airflow. The dormer design gives full function while keeping rain, snow and other elements out. Installation of roof vents are available in any roof size or style.

---

# Accessories



## PEAK BANNER AND FLAG.

The unique MASTERTENT peak banner and flag options are available with the integrated roof peak mounts of the S1 series folding tent. Banners and flags can easily attach to fly high above - looking great and attracting even more attention.

---



## GROUND ANCHORS.

The MASTERTENT ground anchors, including heavy-duty spiral stakes and connecting straps, provide exceptional security when setting up the folding tent on soft ground: grass, gravel, dirt or sand. The ground anchors can be used with base weights for even greater stability.

---



#### COUNTER.

The counter is designed with quality wood tops and sturdy aluminum folding legs that offer mobile convenience with a professional feel. It sets up quickly in seconds and attaches to the tent easily with integrated leg clamps. The half height sidewall installs cleanly along the front of the counter with built-in rail and cord, keeping the colors and graphics of the tent flowing.



22 lbs. base weight



60 lbs. base weight

#### BASE WEIGHTS.

The MASTERTENT base weights are low-profile and made of galvanized cast iron with a zinc coating for durability and rust-proof performance. Available in 22 lbs. one-piece or 60 lbs. two-piece styles, both with integrated grips for easy handling. The 60 lbs. weights can lock around up to four tent legs at once, and all weights can be stacked during transport or if multiple weights per tent leg are needed.





**MASTERTENT - building up moments.**





**Mobile and stable.**



# Pavilion



The MASTERTENT pavilion is suitable for a wide variety of events and services - a great choice as an information center or sales booth, as well as a beverage or food stand and so much more. The pavilion offers an excellent balance of mobility and stability with its robust galvanized steel frame, heavy-duty PVC roof, durable counters and side panels. The roof and side panels can be printed with logos and custom graphic designs for the perfect advertising medium. For convenience all pavilions have an integrated electrical circuit ready for the power supply. For safety in any venue, the PVC roof and counter varnish are fire-retardant meeting North American and European standards.



# Setup



The setup of the MASTERTENT pavilion is very quick and easy as there are no additional tools needed and components feature quick-locking technology for rapid assembly. First the base frame is assembled, then the side panels and counters are inserted, and finally the roof is installed.

All components of the pavilion are packed in five compact transport boxes with secure stacking to provide easy transportation and space saving storage.

  
**INFOPOINT**





# Square pavilion



## TECHNICAL SPECIFICATIONS

Roof width	10' 8"
Eave extension	1' 11"
Internal width	5' 5"
Counter width	1'
Pavilion weight	487.2 lbs.

The Square pavilion is designed to serve as a compact and efficient stand for sales or information. The small structure and roof span makes it suitable for smaller areas, including inside stadiums or shopping centers.



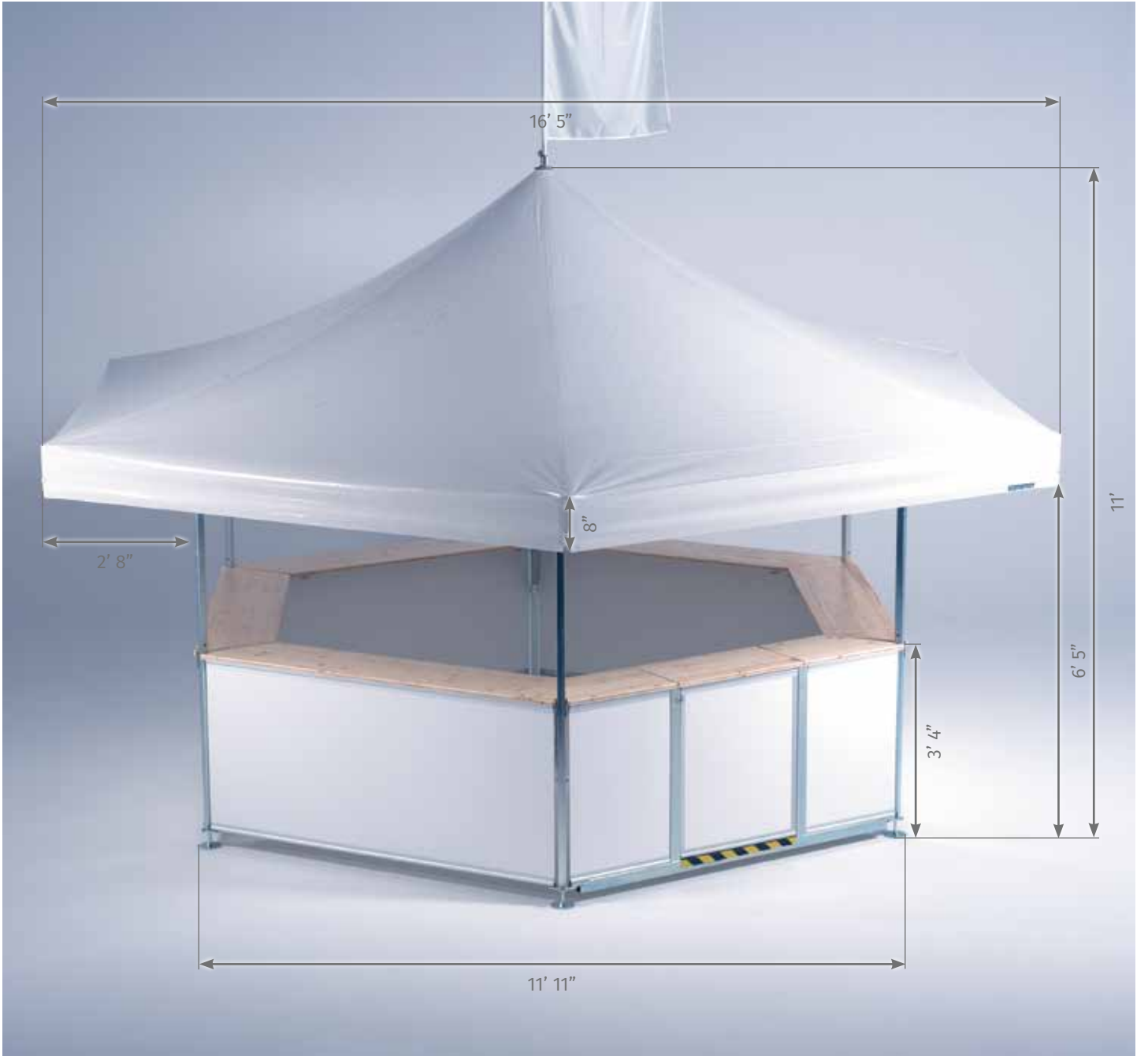
# Hexagon pavilion



## TECHNICAL SPECIFICATIONS

Roof width	18' 11"
Eave extension	2' 8"
Internal width	9' 3"
Counter width	1' 4"
Pavilion weight	787.1 lbs.

The Hexagon pavilion is the reliable go-to for bar stands of leading breweries and beverage companies throughout the world. Its combination of classic design and high functionality meets the high demands of any professional beverage stand.



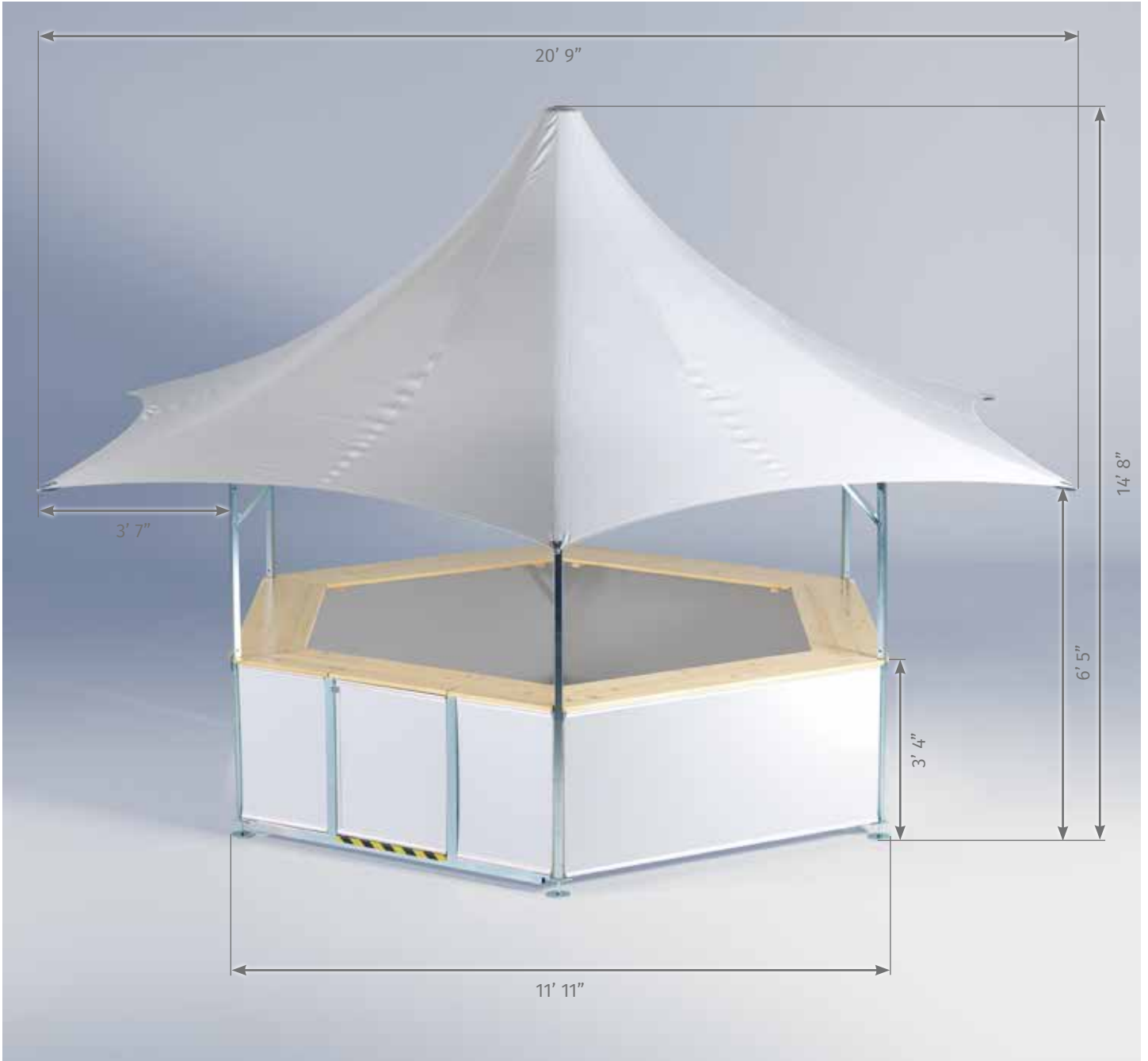
# Hexagon pavilion with star-style roof



## TECHNICAL SPECIFICATIONS

Roof width	20' 9"
Eave extension	3' 7"
Internal width	9' 3"
Counter width	1' 4"
Pavilion weight	662.9 lbs.

The star-style roof of the Hexagon pavilion takes the lines to the next level, giving it a light, airy and modern appearance. This roof can also be added to the classic Hexagon pavilion by replacing the gable and the cantilever arms of the frame.



# Octagon pavilion



## TECHNICAL SPECIFICATIONS

Roof width	20' 2"
Eave extension	2' 8"
Internal width	12'
Counter width	1' 4"
Pavilion weight	886.3 lbs.

The Octagon pavilion has a capacity of 40 people at the counters and offers ample space inside for, beverage dispensing equipment, food supplies and merchandise while still providing plenty of room for the sales staff.



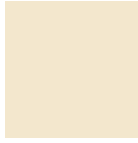


# Colors and customization

The heavy-duty PVC pavilion roofs are waterproof and fire-redarant, available in 10 colors and can be customized with printing in either thermal transfer or digital printing.



White



Pantone 468C



Pantone 116C



Pantone 1665C



Pantone 186C



Pantone 3298C



Pantone 7462C



Pantone 287C



Pantone 427 C



Black

---

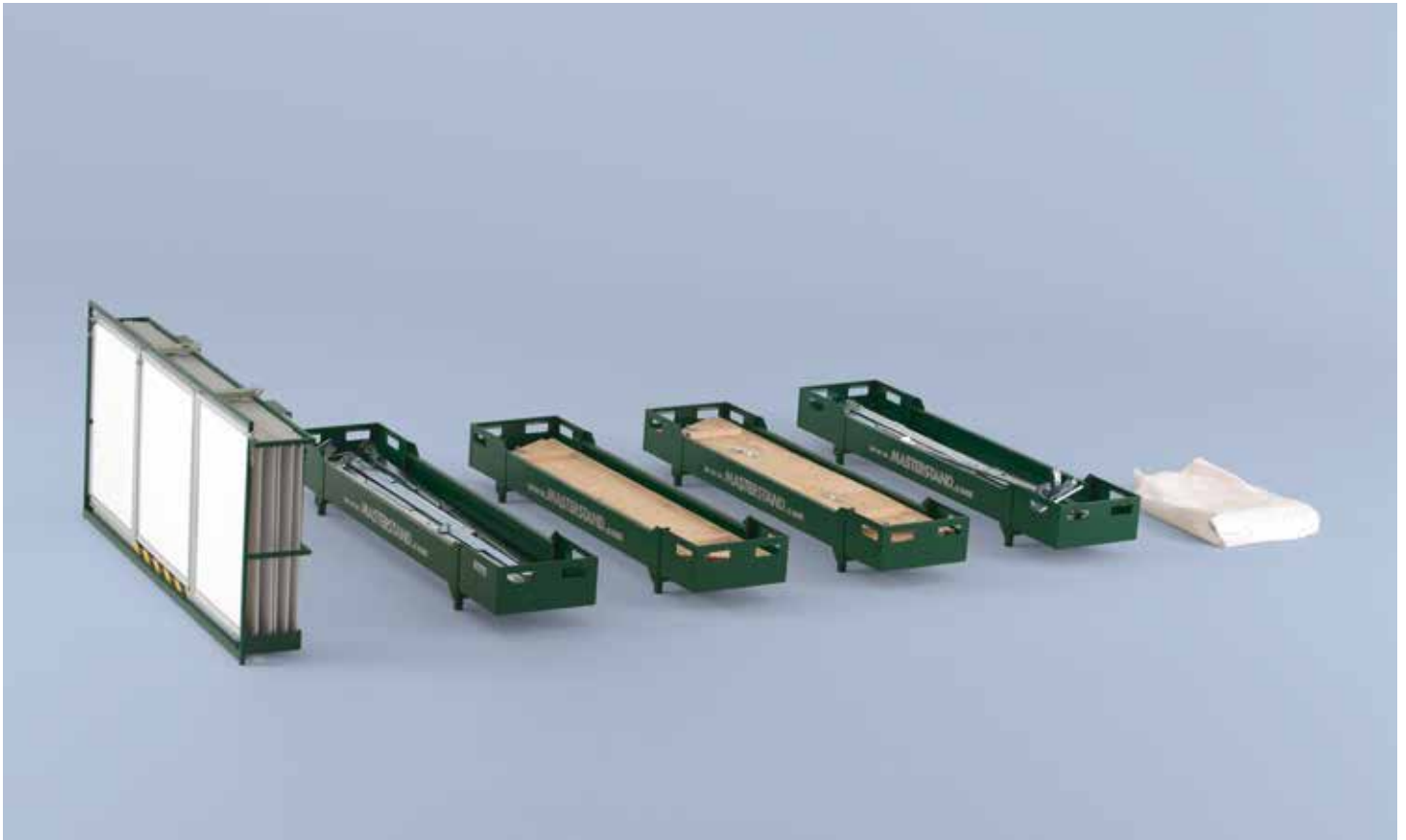
The white side panels can be customized with digital printing, coordinating with any printing work desired for the roof and peak flag.



# Transport container



All components of the MASTERTENT pavilion can be easily and neatly stored in the multiple compartments of the transport container. The interlocking boxes offer clean, safe and compact storage of all the individual parts and can be maneuvered as one unit by forklift or as individual boxes by personnel.



TECNICAL DETAILS	SQUARE PAVILION	HEXAGON PAVILION	HEXAGON PAVILION WITH STAR-STYLE ROOF	OCTAGON PAVILION
L x W x H	87" x 28" x 46"	87" x 32" x 46"	87" x 32" x 46"	87" x 36" x 46"
Consisting of	3 components	5 components	5 components	5 components
Box weight max.	161.2 lbs.	290.6 lbs.	290.6 lbs.	285.7 lbs.
Total weight	487.2 lbs.	787.1 lbs.	800.3 lbs.	886.3 lbs.

# Accessories



The MASTERTENT pavilion is designed to be a perfect trade fair stand, sales booth or beverage pavilion. For every type of use or service need the MASTERTENT pavilion has the perfect accessories that provide the best event or venue results.



COUNTER EXTENSIONS.  
Available for the Hexagon  
and Octagon pavilions.

---



MOBILE HEATER.

---



NIGHT CLOSURES.

---



HALOGEN LIGHTING.

---



STACKABLE WOOD FLOOR.

---



PEAK FLAG.

---

# Certificates and warranties

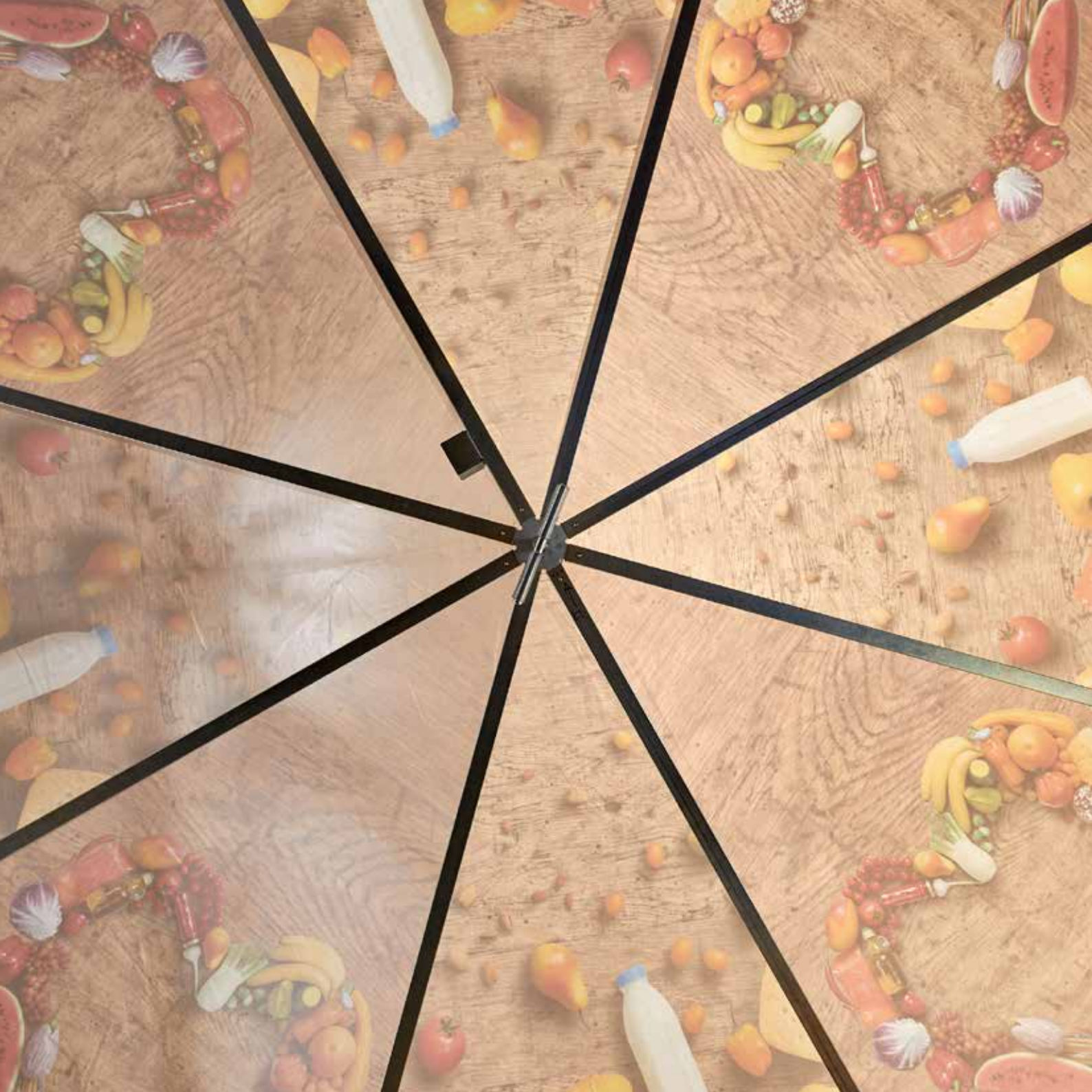
Mastertent's philosophy of quality is reflected in generous warranty service, numerous international certifications, as well as in reliable customer service.

## WARRANTY SERVICE

- 2-year manufacturer warranty on material or production defects of the steel pavilion frame.
- 10-year availability of all spare parts of the frame.

## CERTIFICATIONS

- TÜV certificate
- Certification of stability at different wind speeds
- Static calculations of the frame







**Ready for new things.**



# Inflatables



MASTERTENT inflatables are another amazing option to take promotions and event experience to the next level. The unique eye-catching designs, big presence sizes, and totally customized printing increases the effectiveness of your advertising exponential. Extremely efficient to use - features easy handling, big function and phenomenal advertising, MASTERTENT inflatables are an essential item in your event and advertising tool box. Get ready to show up and blow up... your brand!



All our advertising inflatables are equipped with a continuous blower operating on 120v or 220v power. Depending on the model, the advertising inflatables have either an internal or external inflation blower that simply needs a standard power supply to bring it and your brand to life. MASTERTENT inflatables set up and break down quickly - deflated and folded they neatly go into their transport pack for easy storage and transport to the next event.

Literally, show up and blow up!

- High-quality European production and manufacturing
- 120v or 220v continuous blower - standard power supply is all you need
- Equipped with internal or external blower depending on model

# Tripod



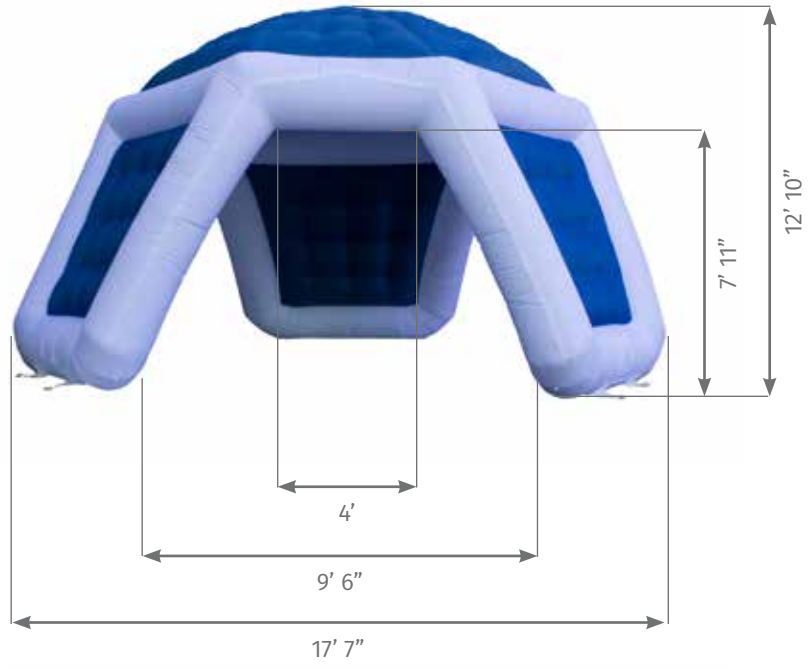
A different kind of advertising tent.

Its patented and striking shape combined with all its customization options makes the Tripod a truly unique product. Communicate your message to the world with a lasting effect.

Size: ~ 20 x 18 ft

Height: ~ 13 ft

Weight: 143 lbs.



## MS5



A great option for special events.

The patented shape of the MS5 is unique and eye-catching. The impressive presence makes the MS5 an ideal contact point for your customers. Completely customizing with your company designs will boost visibility.

Size: ~ 17 x 17 ft

Height: ~ 11 ft

Weight: 130 lbs.





# Kokon



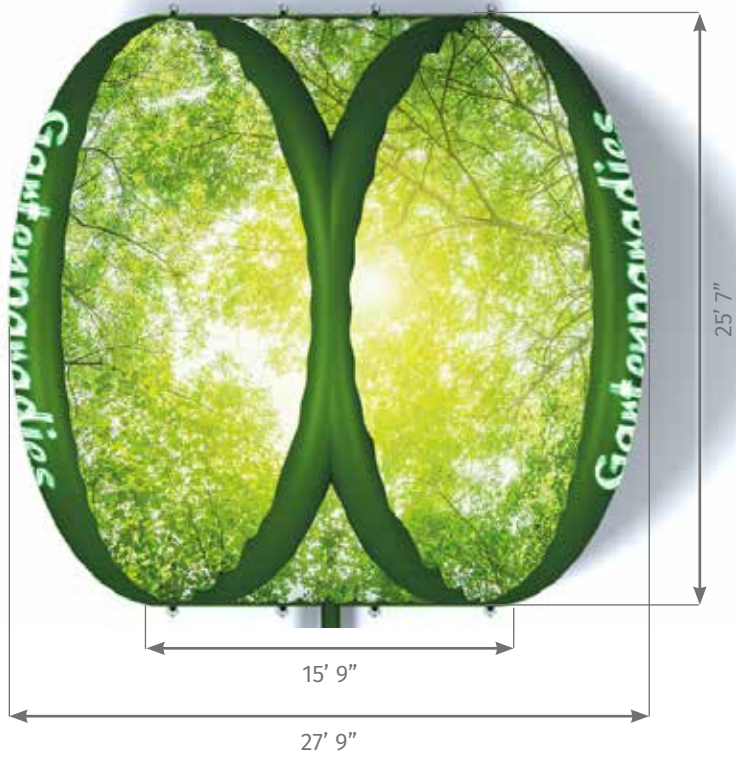
An expansive arch that can't be missed.

With the patented Kokon you can stand tall and cover more - other arch styles pale in comparison. It unfolds quickly and is perfectly suited as a transit arch.

Size: ~ 28 x 25 ft

Height: ~ 16 ft

Weight: 200 lbs.



# Tequila



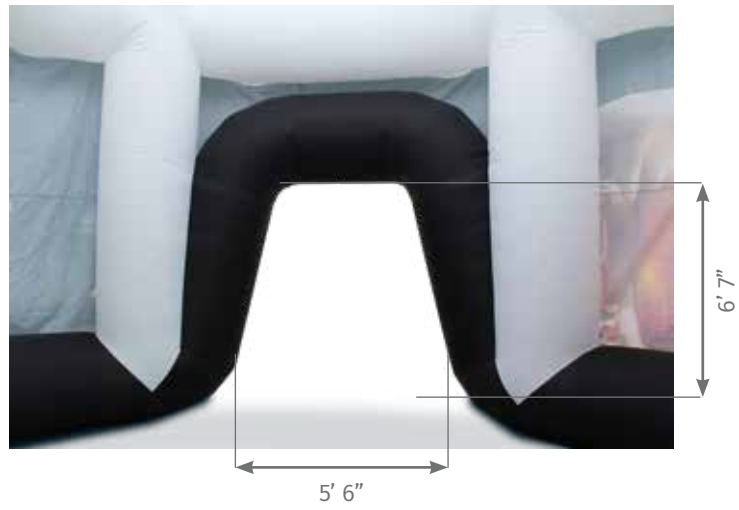
Big advertising and big function.

The patented Tequila attracts the crowds with its size and form. The advertising presence of this inflatable design emerges even in the biggest events and is distinctly memorable to visitors.

Size:  $\emptyset$  = ~ 29 ft

Height: ~ 26 ft

Weight: 243 ft



# Bottle



The classic that brings on the thirst.

The bottle, in its classic and most versatile shape, is one of the most popular inflatables in the Mastertent line up. The customized printing allows the inflatable bottle to transform into 20 ft of eye-catching advertising.

Size:  $\varnothing$  = ~ 5 ft

Height: ~ 20 ft

Weight: 86 lbs.

# Fan

All MASTERTENT inflatables are equipped with a continuous blower operating on 120v or 220v power. Depending on the model, the advertising inflatables have either an internal or external blower. The powerful blower simply needs a standard power supply to bring it and your brand to life. Show up and blow up!



**Blower type 1:**  
Power: 0.75 kW  
Speed: 2,850 RPM  
Decibels: 71 dB(A)

---



**Blower type 2:**  
Power: 1.1 kW  
Speed: 2,850 RPM  
Decibels: 74 dB(A)

---



**Blower type 3:**  
Power: 1.5 kW  
Speed: 2,850 RPM  
Decibels: 76 dB(A)

---



**Expand your horizon.**







MASTERTENT USA

141 Robins Street

Lowell, NC 28098 - USA

M 704.312.1600

F 704.312.1610

[sales.usa@mastertent.com](mailto:sales.usa@mastertent.com)

[www.mastertent.com](http://www.mastertent.com)

