

Ask Your
Product Expert
about Package
Discounts

MASTERTENT®

MASTERTENT®

Building up moments.

10x10



Built to Last | 3x Build Strength

Discover pro-grade, all-aluminum designs. Canopy tent construction perfected to the last detail.



Certified, Tested Performance

100% Waterproof. Fire-Rated. Wind-Tunnel Tested.



Endless Customization

Roof Styles. Walls. Colors & Printing. Accessories. Custom Projects. Create your ideal tent today.



10x10ft Models Starting from **\$1,248***

Connect with our Product Experts for pricing, specs, customization, and more.

*Product package, volume and various discounts available. Prices subject to change without notice.

MASTERTENT® | A Zingerle Group® Brand

sales.usa@zingerle.group | 980-580-0920

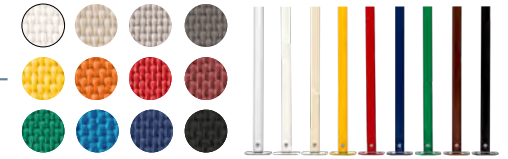
Build your own tent at www.mastertent.com!

1 Tent, 100 Possibilities

Our 10x10ft Canopy Tent

A canopy tent that can do more, be more, and take you further. With robust construction, easy set-up and a wide array of roof styles, sidewalls, colors, and accessories, create the perfect tent for any event or occasion. Get equipped to showcase, excel, and shine with Mastertent.

Patented Peak Flags & Banners, Pg. 5



Fabric & Color Options, Pg. 7



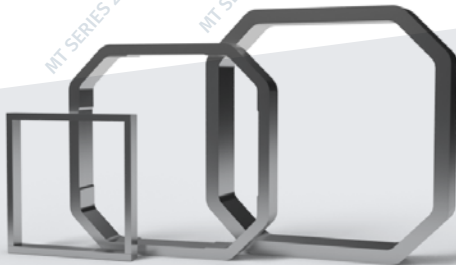
Signature Roof Styles
Pg. 6



A-La-Carte Sidewalls
Pg. 4

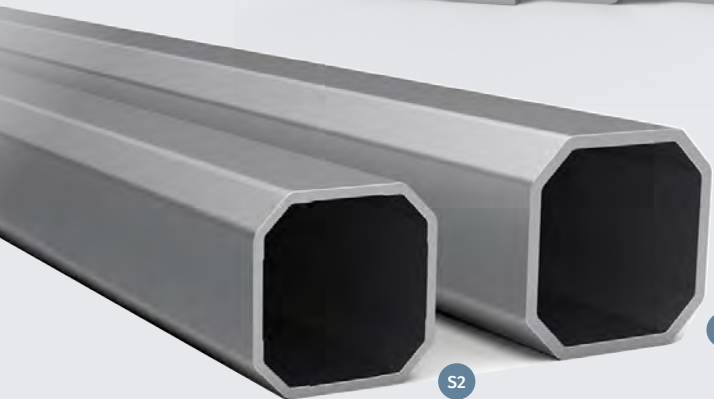
3x Strength,
Octagonal Frame,
All-Aluminum
Construction
Pg. 3

INDUSTRY AVG.



MT SERIES 2

MT SERIES 1



S1

S2

S1

Series 1 10x10 | From \$1,598*

Industry-Leading Construction,
Customization & Features

S2

Series 2 10x10 | From \$1,248*

Streamlined Durability,
Premium Quality



Smart Accessories, Pg. 5

*Product package, volume and various discounts available. Prices subject to change without notice.

What Makes a Mastertent? Canopy Tent Construction



Robust, All-Aluminum Design

With a third the weight of steel, our tents use all-aluminum parts for a stronger build from peak to footplate.



Patented Tensioning System

In extension of our durable frame design, the outside tensioning pieces keep your tent roof looking sharp.



Smart Corner Clips

Keep rooflines tight and valances smooth with our integrated corner clips - a feature missing from common tents.



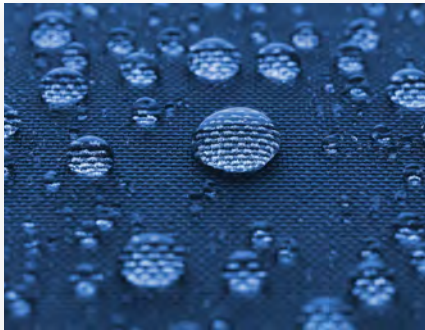
Smooth Set-Up Details

Tent trusses and telescoping legs are equipped with integrated separators to prevent metal-on-metal scraping.



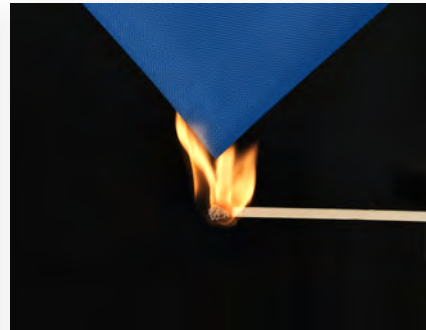
Frame & Fabric Protection

To avoid wear, we equip rubber caps and PVC fabric reinforcements at all contact zones between frame and roof.



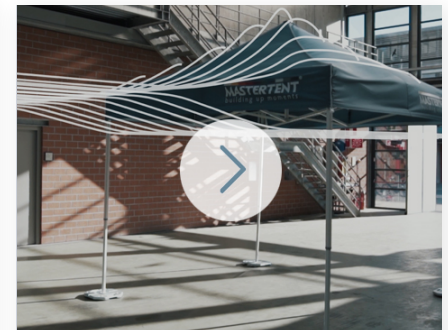
Pirontex® & Waterproof Fabrics

Get 4x extreme performance across the board with our signature Pirontex® and high-quality waterproof fabrics.



Certified & Fire-Rated

All of our Mastertent fabrics are certified fire-retardant under industry standard fire and safety codes.



Wind-Strength Tested

We wind-tunnel test our canopy tents for frame and fabric material strength with performance up to 60mph!

Your Choice of A-La-Carte Sidewalls Wrap Your Tent in Functional Style



Add up to 4 Wall Options to Your 10x10ft Tent | From \$119 per Wall*

1. Closed Sidewall

Ideal Backdrop or Weather Protection

2. Window Sidewall

Rectangular, Arched, and Panoramic Styles

3. Roll-Up Door Sidewall

Zippered, Roll-Up Door for Easy Access

4. Half-Height Sidewall

Pair with an Aluminum Sidebar or Wooden Counter

5. Upper Closure

Pair with Half-Height Wall

6. Interior Dividing Wall

Built-In Privacy, Signage, and More

7. Elegant Corner Curtains

Fixed-Position Corner Drapes

8. Rescue Sidewall

Tactical 3-Mode Window/Screen/Door with Extended PVC Base Panels

See Sidewalls

*Product package, volume and various discounts available. Prices subject to change without notice.

Accessorize for Ultimate Functionality

Mobile Tech, Tools & Gear



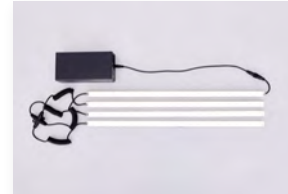
Transport Wheels



Electric Fans & Heaters



LED Light Systems



LED Battery Pack



Ground Anchors



Base Weights



Ballasting Systems



Free! Transport Bag



Sidebars & Counters



Flags & Banners



Bags & Storage



Tent Ceiling & Flooring

Accent your tent with eye-catching lights and flags. Keep comfortable with mounted electric fans and heaters. Stay safe with on-site securing systems. Find the right accessories to fit your exact mobile needs.

General Accessories

Tent Tech & Electronics

Mobile Climate Control

On-Site Securing Systems

Flags & Banners

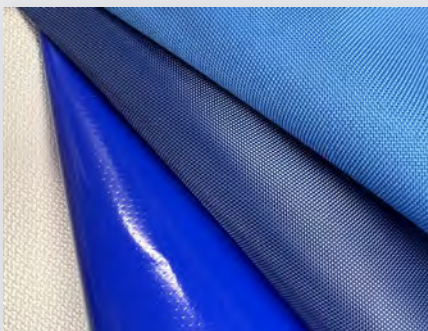
Multi-Tent Accessories



See Accessories

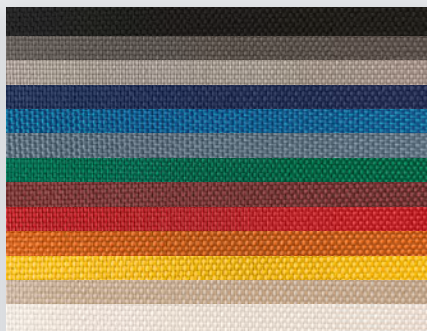
Endless Customization

Fabrics, Colors, & Printing



Premium Fabric Options

Choose from our signature Pirontex® ultra-durable fabric, double-weave Oxford, PVC, and Fiberglass options.



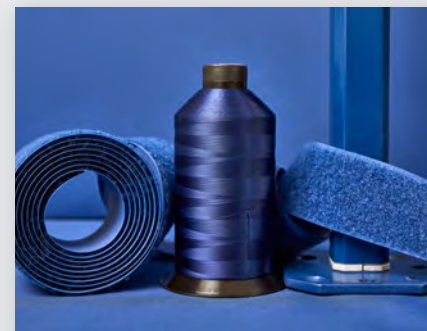
Vibrant Fabric Colors

Our standard color range is anything but standard. These 13 vibrant fabric colors are ready to make a statement.



Series 1 Frame Colors

Choose from 9 standard powder-coated colors or from 200+ custom RAL colors for serious durability and style.



Color-Matched Details

In our ongoing attention to detail, all stitching, trim, and Velcro are color-matched to your tent fabric.



Heat Transfer Printing

Make your mark with carefully placed logos and graphics. Best for spot logos, text, and branding graphics.



Dye-Sublimation Printing

Show off with complete edge-to-edge printing! Perfect for custom colors, patterns, and maximum impact.



In-House Design Services

Our In-House Design Team will design free custom 3D layouts of your tent graphics for you - free of charge.



Custom Options

As your tent manufacturer, work with us directly to create a custom tent, sidewall, or mobile solution to fit your needs.

The Mastertent Online 3D Design Center

Explore, design, and customize your personal canopy tent.

- 1 Choose Size, Series & Roof Styles
- 2 Arrange Your Choice of Sidewalls
- 3 Customize Fabrics, Colors & Print
- 4 Equip Functional Accessories
- 5 Request Your Personal Quote

Design Your Tent

View your tent in AR!





TAKE OUR SHOES OUT FOR A TEST DRIVE



[Browse the Gallery](#)

GET INSPIRED

Industry-Leading Construction 10x10ft Canopy Tent Specs



	Series 1	Series 2
Pack Size*	14x14x61"	14x14x61"
Frame Material	All-Aluminum	All-Aluminum
Connector Material	Aluminum	Aluminum
Fabric Materials	600D Pirontex®, 500D Oxford Polyester 400g PVC, Fireproof Fiberglass	
Signature Roof Styles	✓	✗
Height Extensions	Up to 36"	Up to 12"
Weight	69.8lbs	60.1lbs
Leg Shape	Octagonal	Octagonal
Leg Profile Diameter	43mm	37mm
Leg Profile Thickness	2.5mm	2.1mm
Truss Profile	30x15mm	28.5x15mm
Truss Thickness	2.8mm	2mm
100% Waterproof	✓	✓
Certified Fire-Retardant	✓	✓
Ltd. Lifetime Warranty	✓	✓
Spare Part Service	✓	✓
Anti-Corrosion Warranty	✓	✓

*Pack size and weight subject to vary with tent roof styles.

Have a Question? An Idea?

Our Product Experts
are here to help!

- Expert Product Assistance
- Direct Discounts & Pricing
- Design Support & 3D Layouts
- Technical Guidance & Details
- Production & Delivery Times



LTD. LIFETIME WARRANTY

100% Satisfaction Guarantee
30-Day Returns & Exchanges
[See Warranties & Certifications](#)



10-YEAR SPARE PARTS SERVICE

Maintain your tent with quick,
easy-install replacement parts.
[See Spare Parts Service](#)



FINANCING AVAILABLE

PayPal, Credit Key, and more.
[See Financing Options](#)



LOOKING FOR MORE SIZES?

Browse all 12 sizes.
[See Sizes](#)

MASTERTENT®
A Zingerle Group® Brand

sales.usa@zingerle.group

980-580-0920

www.mastertent.com

